

**Appendix A Maps** for Mowing San Augustine Properties as of 06/04/2020 RFP

1. City Hall 301 S. Harrison St.



2. Police department 810 US 96 N.



3. Annex building Hwy 96 N



4. Water Tower Highway 96 north



5. Chamber of Commerce log cabin 611 W Columbia St.



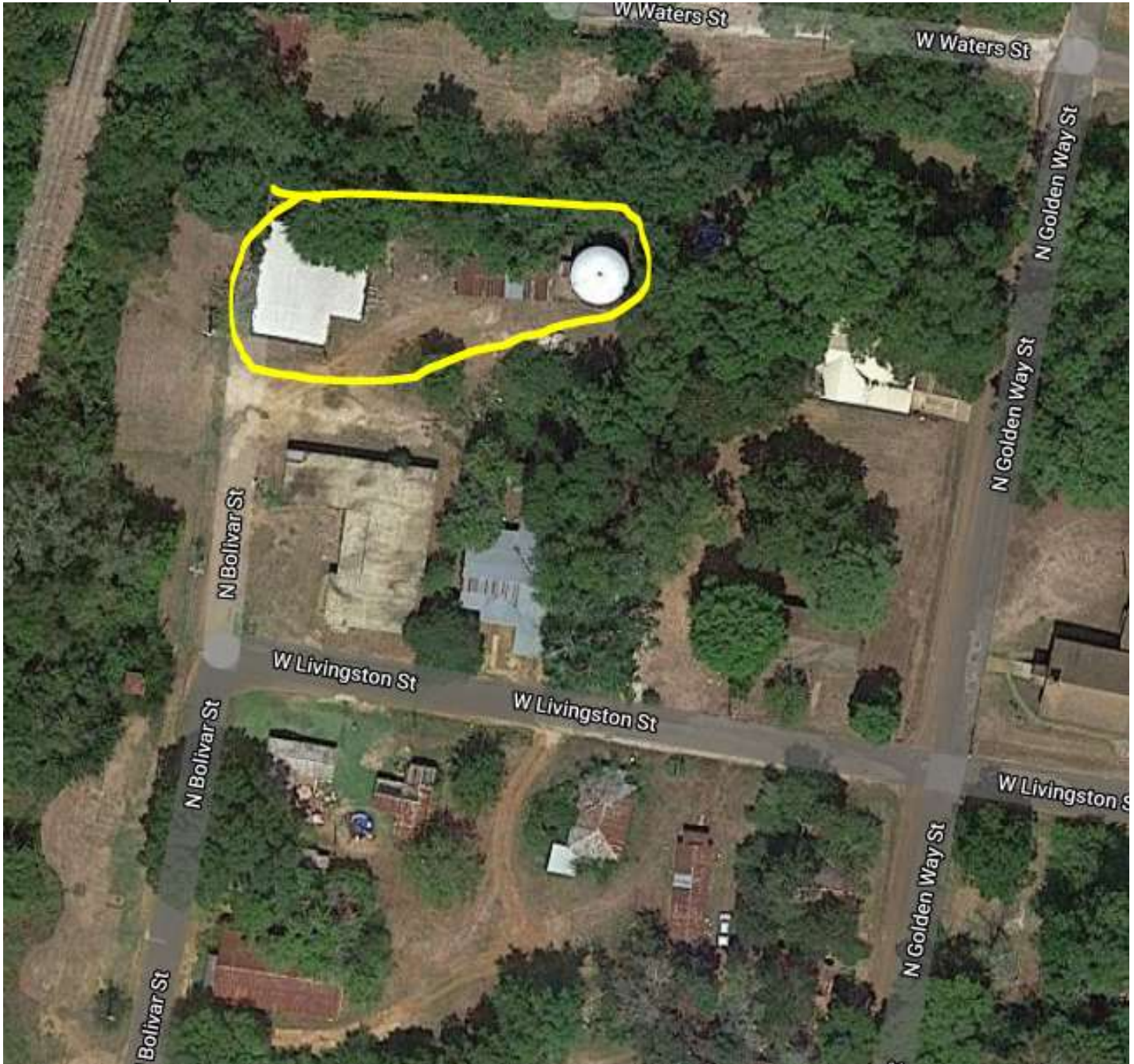
6. Lewis hotel 500 Columbia St.



7. Ayish hall and train caboose



8. Old electrical plant at the end of N Bolivar St.



9. Senior Center 405 S Bolivar St



10. The Park at Harrison Street and Park Street/Golden Way Street





11. Public Library 413 E Columbia St



12. Water Tower on Milam St. behind the hospital



1. Baseball Park Hwy 21 E



14. Water treatment plant 501 FM 2213 (Since the photo, the tanks are different as shown)



15 16 & 17 Waste Water Plant & Solid Waste Transfer Station Hwy 147 S.

